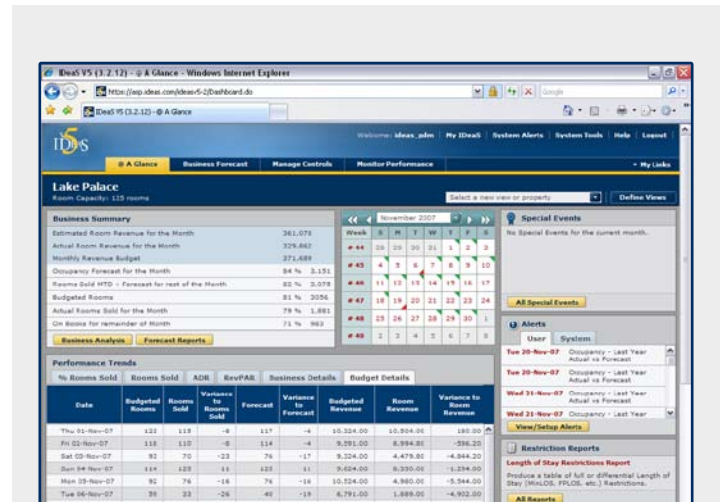
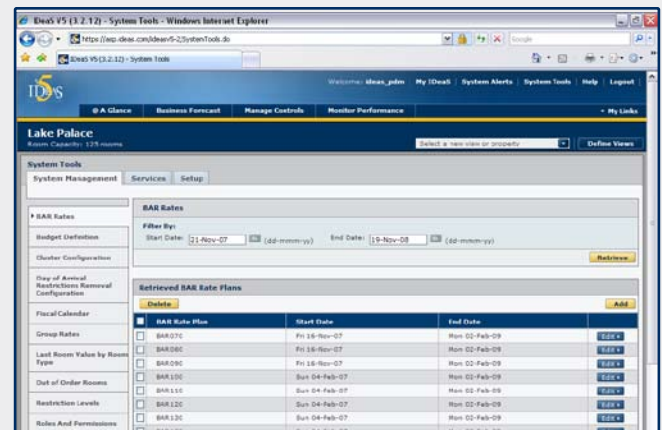


Compare Rooms Sold and Revenue Against Data at the Market Segment and Hotel Level

Need to quickly compare rooms sold and revenue against data at the market segment and hotel level? IDEaS V5i Budget module provides hoteliers with an easy method to assess your hotel's performance on a daily, weekly, monthly, and annual basis against your financial goals. This integrated module offers an array of easy to navigate charts and reports, automatically placing the information you need where you can use it.



IDEaS V5i reports provide the analysis tools for in depth comparisons, trend analysis, and customized views.



Easy to use data entry screen makes setup simple.

For more information visit, www.ideas.com

Key Benefits:

- Compare rooms sold and revenue against data at the market segment and hotel level
- Accurately react to variance between budget and actual or forecasted performance
- Detailed reporting provides analysis tools for in depth comparisons and trends
- Import options automatically populate budget fields with outside source data

Download IDEaS Free On-Demand Webinar:
 Revenue Management - How to Get Started
<http://go.ideas.com/wn1>

How it Works

IDeaS V5i Budgeting module provides a clear view of your hotel's performance throughout the year and gives you the ability to quickly and accurately react to change between budgets, actual and or forecasted performance.

Budget information is presented on several convenient charts and reports providing you with data on budgeted rooms sold, budgeted room revenue, budgeted Average Daily Rate (ADR) and Revenue per Available Room (RevPAR). This provides information for in-depth comparisons, trending analysis and the ability to compare rooms sold and revenue at the hotel and market segment level to corresponding budget figures, delivering key metrics for tracking your hotel or estates' business performance.

With IDeaS V5i Budget module you will spend less time gathering the numbers and have more time for strategically managing your performance. Available for IDeaS V5i and IDeaS V5i Forecasting.



Corporate Headquarters

8500 Normandale Lake Blvd
Suite 1200
Minneapolis, MN 55437 USA
Phone: + 1 952 698 4200

Americas

Seattle, WA
Phone: + 1 206 767 2289

Minneapolis, MN
Phone: + 1 952 698 4200

Washington, DC
Phone: + 1 202 232 3839

Naples, FL
Phone: + 1 239 594 9701

Europe, Africa & Middle East

Munich, Germany
Phone: + 49 8106 303253

Dusseldorf, Germany
Phone: + 49 8106 303254

United Kingdom
Phone: + 44 (0) 118 982 8100

Asia/Pacific

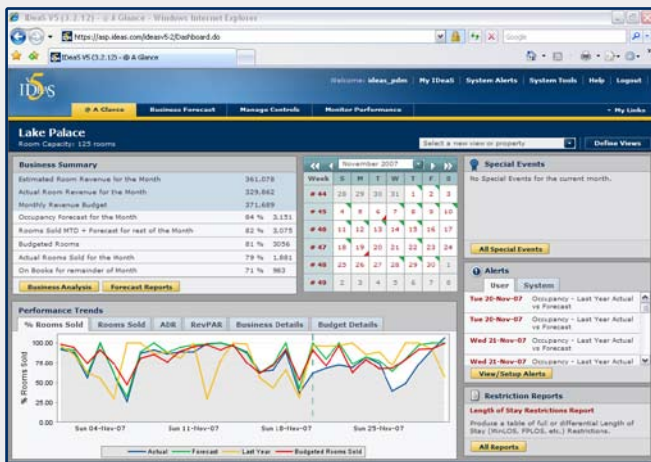
Beijing, China
Phone: + 86 10 5913 2755

Sydney, Australia
Phone: + 61 (0) 2 94160466

Singapore
Phone: + 65 6398 8988

New Delhi, India
Phone: + 91 11 4143 6824

Pune, India
Phone: + 91 20 2 567 9499



Performance Trend Charts give a clear view of hotel performance against budget goals.

For more information visit, www.IDEAS.COM



For more information on the benefits of Pricing, Forecasting and Optimization visit IDeaS online at

www.ideas.com



Mixed Sources

Product group from well-managed forests, controlled sources and recycled wood or fiber
www.fsc.org Cert no. SW-COC-002515
© 1996 Forest Stewardship Council

