



## **IDEaS Centralized Control**

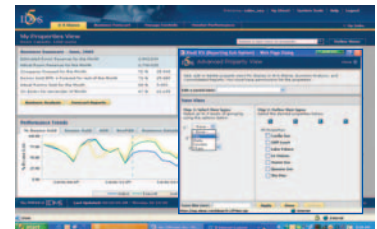
Whether you manage a multi-national chain with global group business or two bustling properties, the need to see your data across multiple properties in a clear, accurate and timely manner has become mission-critical in today's hospitality environment.

Decisions, both strategic and tactical, need to be made daily affecting the entire estate. Layering these daily decisions against the real-world issues of staff realignment, turnover, lowering operating costs or increasing profits and it becomes difficult to address a fraction of the items competing for your time.

## **IDEaS Multi-Property View:**

IDEaS delivers a clear view of data across all the properties in the estate which can then be combined in an unlimited number of user defined consolidated views. With IDEaS you'll easily be able to:

- Complete real-time summation of data across user defined multi-property groupings.
- Conduct analysis across a cluster of properties for the optimal placement of business when guests can be accommodated among a group of hotels.
- Manage by exception across all properties by accessing consolidated data in screen and report formats.
- Execute centralization strategies in a timely manner or maintain productivity when resources are not available for hands-on revenue management.
- Access all properties, instantly, from anywhere in the world, anytime.
- Easily consolidate all your data despite disparate inventory control systems across the estate.



*A simple screen allows unlimited user defined multi-property views.*



*Easily change your view from a single property to a consolidated view.*

## Cluster Yielding:

A requirement for hoteliers who have the ability to yield across properties, IDEaS Cluster Yielding gives hoteliers the opportunity to maximize revenue across a cluster of properties. Hotels are easily grouped according to the business needs of the operation with user-defined flexibility. Recommendations can be easily implemented by a central reservation office. Any combination of hotel properties can be included to optimize demand and increase revenue and profitability.

### LINDNER Hotels & Resorts

*"IDEaS' brings us the ability to look at each property in our estate either individually, in clusters, or even chain-wide thereby allowing us to optimize across all our properties centrally."*

## Consolidated Reporting:

IDEaS Centralized Control Module includes a spectrum of reports designed to deliver a clear view of your data across multiple properties. A wide range of reports are available to support the revenue management culture and systems already in place at your hotel. With multiple properties, it is even more important to have tools which support management by exception, allowing you to focus on those areas which can benefit most from your time. The Occupancy and Alert Highlighter reports allow you to filter data based on your parameters, to highlight those properties that need extra attention. Additional reports have been tuned to support multi-property data requirements and analysis – putting both consolidated figures and individual property performance at your fingertips. These reports represent the next generation in control for hotels that yield across a set of properties or that need to support a centralized revenue management strategy.

## Clarity, Confidence, and Control regardless of your Estate's Size or Distribution

No matter how large and diverse your estate, no matter where your hotels are located, IDEaS Centralized Control Module is designed to put you in command of your data. Imagine having all the information you need, delivered in a way that maps to how your business operates. With IDEaS what you imagine is reality.

Isn't it time you experienced what many of the world's leading hoteliers have already discovered? Call today and discover how you can benefit by working with IDEaS.